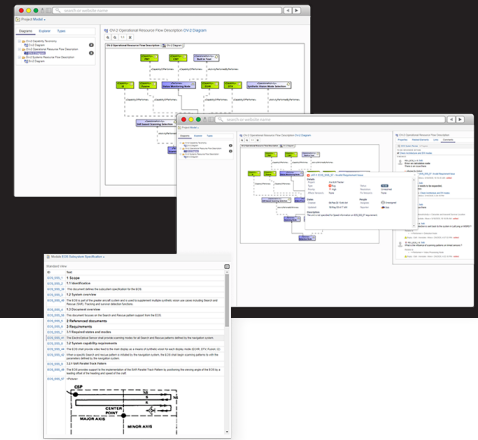




PRODUCT SHEET

Web-Based Engineering Data & Models Review Platform

SECollab enables intuitive and powerful review capabilities in a versioned environment and allows linking of your findings with you're preferred Change Management system.



ALL YOUR MODELS IN ONE PLACE.

SECollab is a web review platform that federates engineering design, requirement, and change data across the entire project lifecycle. Leverage and integrate the knowledge of your teams, wherever they are, through a web-based data and model sharing and reviewing platform.

Share and Review Engineering Assets of the Enterprise.

SECollab enables intuitive and powerful review capabilities in a versioned environment and allows linking of your findings with you're preferred Change Management system. Whether you're publishing requirements, model content, or documents, access your data from a single access point. Perform collaborative multi-tools reviews, gathering comments, and data together.

SECollab is compatible with:

- IBM® DOORS® 9
- IBM Engineering Systems Design Rhapsody®
- IBM Jazz™ CCM
- Microsoft® Word™, Excel®, PowerPoint®
- Sparx Systems Enterprise Architect
- Cameo MagicDraw
- Eclipse Capella
- UNICOM System Architect®
- Mega HOPEX
- Atlassian Jira®
- Siemens Polarion ALM™ software*



ALL YOUR DATA FROM A SINGLE ACCESS POINT

Publish documents and model content, including diagrams, from your preferred modeling tool onto a web-based platform. SECollab allows you to easily publish your model as a new asset or as a new version of an existing model, make collaborative reviews, analyze published data, and share and access data from a single access point.



SHARE CONTENT OUTSIDE OF THE AUTHORING TOOLS

Publish and share data or model content independent of any of your tools. Whether you're publishing requirements, model content, or documents, access your data from a single access point. With its advanced search capabilities, SECollab makes it easy to navigate, analyze content, and identify data, model elements, or diagrams.

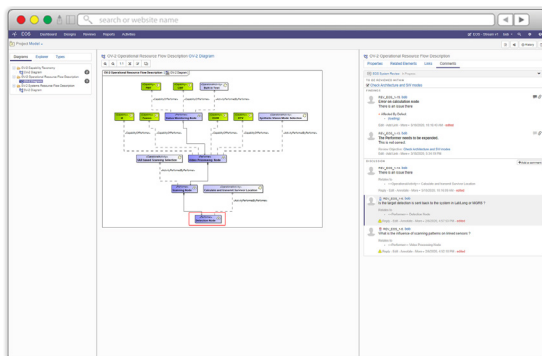
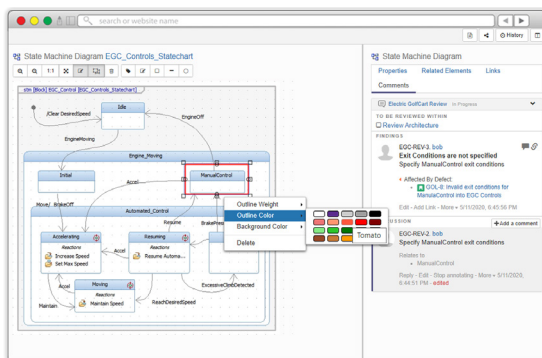
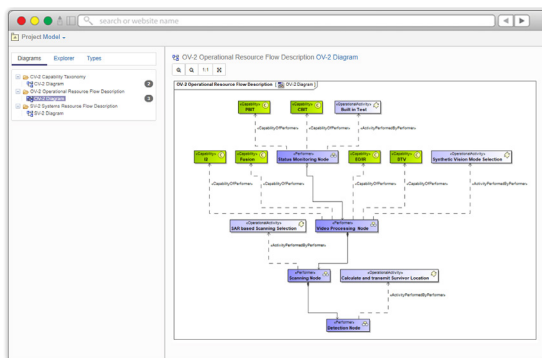


REVIEW & ANALYZE PUBLISHED DATA

SECollab allows you to set up reviews across various data sources and models. Comment on any artifact in a consistent cross-tool context review. Perform collaborative multi-tool reviews, gathering comments and data together, in one single platform.

PRODUCT FEATURES

Tool	Title
1.Requirements	
DOORS	EOS Subsystem Specification
2.System Architecture	
MEGA	EOS Architectural Description
MagicDraw	EOS DODAF2 Views
Capella	EOS Operational Analysis
3.Software Design	
Rhapsody	EOSRhapsodySoftwareLevel
4.Documents	
Word	EOS IR Data.docx
PowerPoint	EOS Review - Reading Path.pptx
Uncategorized	
Uncategorized	



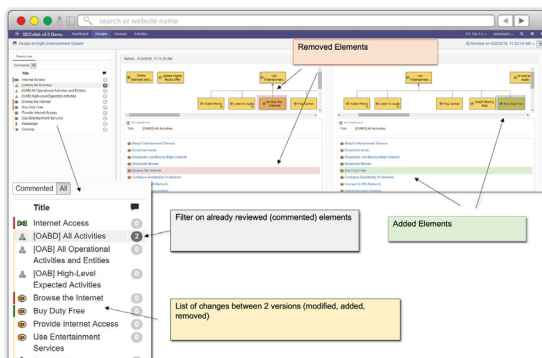
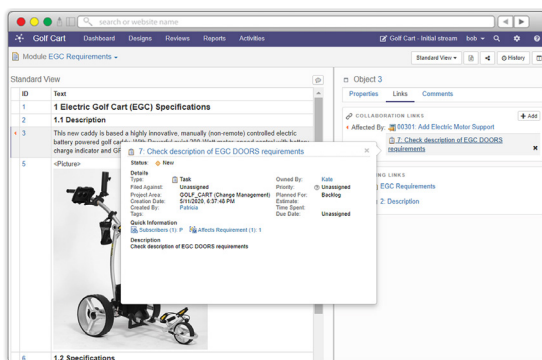
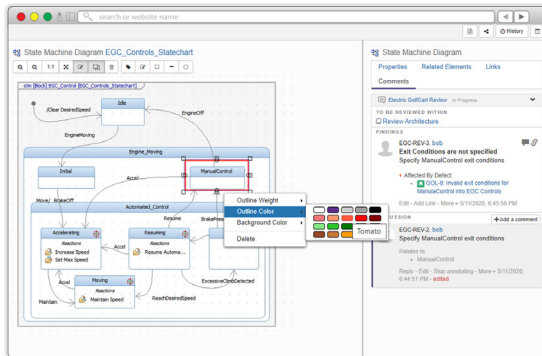
SHARING DATA AND MODEL CONTENT

- Publish documents or model content, including diagrams, into a web platform.
- Control the content to be shared and who will access the information.
- Inspect artifacts in an intuitive and efficient user interface (without authoring tool knowledge or license).

REVIEWING AND ANALYZING PUBLISHED DATA

- Define Review objectives and contributors to focus reviewers on specific data and goals.
- Comment and annotate any artifact in a cross-tool context review.
- Manage discussion threads in a collaborative engineering approach (internally or opening a portal to partners or customers).
- With advanced search capabilities in the shared repository, easily navigate, analyze content, and identify data, model elements, or diagrams.

PRODUCT FEATURES



FORMALIZE FINDINGS AND LINK WITH CHANGE MANAGEMENT SYSTEMS

- Define formal findings to conclude discussion threads.
- Using OSLC technology, associate any compatible Change Management system to fulfill your standard change request process.
- Link any finding or model artifact with issues from your Change Management system:
 - Atlassian Jira
 - IBM Jazz CCM (RTC)
 - Siemens Polarion

VERSION MANAGEMENT AND MODEL DIFF

SECollab enables a unified context across the set of disconnected engineering tools.

- Publish successive models versions in a configured repository managing streams and baselines.
- Publish a new version or update an existing version of any resource set.
- Display all differences for resource, diagram, property, and relationship elements.
- Highlight added, deleted or modified elements on changed diagrams.

PRODUCT FEATURES

MANAGE LINKS & TYPES ACROSS YOUR UNIFIED ONTOLOGY

- SECollab helps you to define a transversal architecture viewpoint by specifying your own business ontology to query the heterogeneous data aggregated from the published tools.
- Add custom types, queries, and links across the published artifacts:
 - Types will be defined to strongly type your concepts (your “root” business objects).
 - Links will be constrained by those new Types, defining the relationships between them.
 - Queries can be defined and executed over the whole Graph Database resources and links (checking constraints on types, properties of resources and relationships).

OSLC-ENABLED REPOSITORY

SECollab provides a configured repository with OSLC native support. Acting both as OSLC Consumer & Provider, each individual design artifact is accessible and linkable with other resources (internally or externally with friended OSLC applications).

REPORTING ON DOC EXPORT

- Monitor your compliance using real-time reporting:
 - Automatic building of web reports.
 - Based on queries exploring the graph.
 - Various display patterns (coverage, lists of filtered objects, trends).
 - Drill-down access to assets.
- Export reviews and model content extracts into PDF or Word documents.

SDK AND APIS

- Fully documented Java SDK for publication.
- OSLC REST APIs to access information remotely.
- Complete examples and snippets available from our public Git repository.

KEY BENEFITS

Easy Access for Stakeholders

Enable sharing between stakeholders by providing access to data in a full web-based environment.

Simplify the Reviewers' Focus

Quickly focus the reviewers on the parts that concern them. Allow reviewers to view the comments in progress, avoiding redundancy, and encouraging collaboration via discussion threads.

Collaborate Across Reviews

In the SECollab web platform, publish your data throughout the project's milestones and collaborate internally with team members, and externally with customers.

Built-in version management system.

SECollab manages versions of your reviewed assets. Publish a model as a new asset or as a new version of an existing model. Both links and data are managed and can be baselined.

Integrate with your CM Items

Using OSLC, you can link published data and review artifacts with your Change Management System. Jira, Jazz CCM, and Polarion are supported by SECollab.

Intuitive UI

With an intuitive UI and advanced search capabilities, users can easily navigate, analyze content, and identify data, model elements, or diagrams in the data warehouse.

About SodiusWillert

SodiusWillert designs and distributes software solutions for Enterprise Interoperability, Data Transformation, and Model-Based Code Generation to improve traceability, exchange, and sharing of engineering data for the Aerospace, Automotive, Transportation, Defense and Medical industries. For more information, visit

sodiuswillert.com.



USA
418 N. Main Street 2nd Floor
Royal Oak, MI 48067
+1 (248) 270-2950

GERMANY
Hannoversche Str. 21,
31675 Bückeberg
+49 5722 9678 60

FRANCE
34 Boulevard du Maréchal A. Juin
44100 Nantes
+33 (0)228 236 060