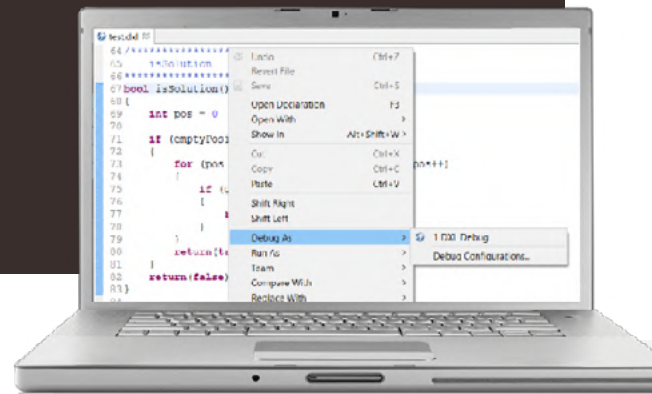




PRODUCT SHEET

**Edit, browse, compile,
execute, and debug your
scripts**



Feature-rich platform for faster, better results

IBM Rational DOORS is a well established platform for engineers, allowing them to manage their project requirements in a flexible environment. DOORS data is manipulated with a dedicated language, DXL (the DOORS eXtension Language).

To overcome the limitations of the DOORS native editor, SodiusWillert has developed the DXL Editor Pro, offering unmatched features to facilitate developers' lives.

Going far beyond syntax highlighting, the DXL Editor Pro is a real development environment for DXL built on the market-leading Eclipse platform, bringing its richness and power to provide a first-class environment for editing, executing and debugging your DXL scripts, on par with other well known languages such as Java and C++.

Improve efficiency and
reduce development time
with DXL Editor Pro.

Features include:

EDITING

- Syntax highlight
- Mark occurrences
- Content assist
- Text hover

BROWSING

- Outline
- Project explorer

COMPILATION

- Compilation
- Problems view

EXECUTION

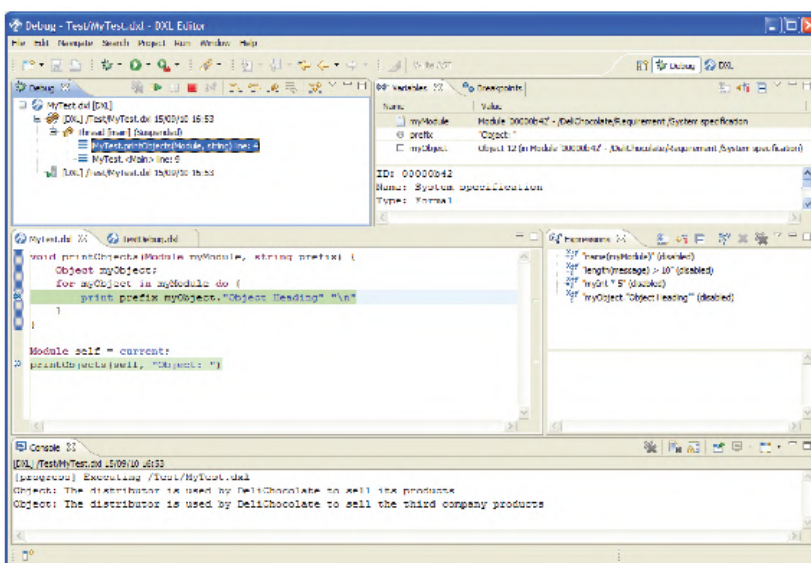
- Run
- Console

DEBUG

- Breakpoints insertion
- Step-by-step debug
- Variable inspection
- Expression evaluation

REFERENCE MANUAL

- Added to Eclipse help view
- Copy/paste code





Editing Features

SYNTAX HIGHLIGHT

Keywords, strings, comments and function calls are highlighted.

MARK OCCURRENCES

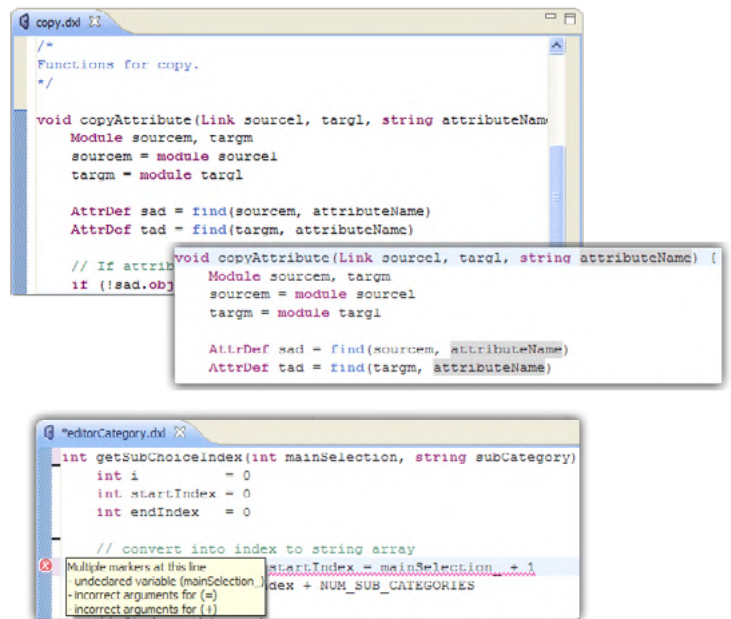
Mark Occurrences dynamically highlights the occurrences of the word currently selected in the editor.

CONTENT ASSIST

Content Assist provides a list of suggested completions for partially entered strings. Templates are shown together with the Content Assist proposals. There are existing templates, such as 'for', 'if' and more, but you can also define new templates.

TEXT HOVER

When the mouse is over a DXL function call, a tooltip displays the function signature and its associated comment, if any.



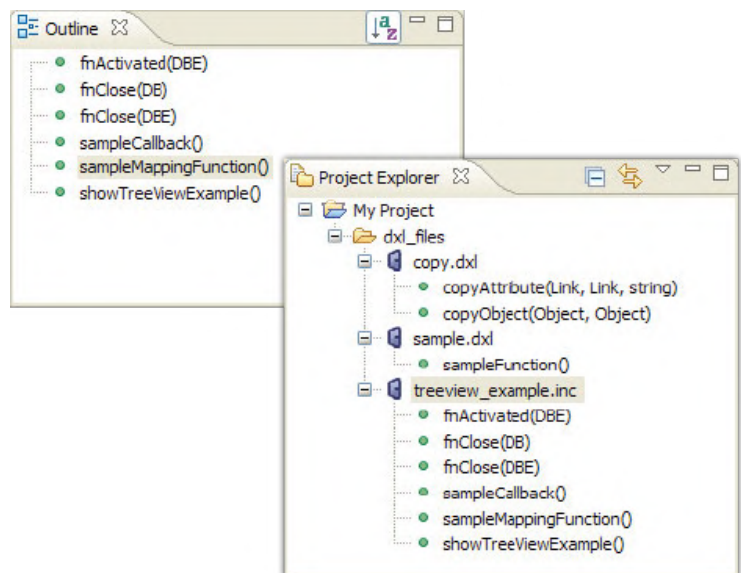
Browsing Features

OUTLINE

The Outline View displays the structure of the DXL file, listing the functions declared within it, and automatically refreshing as you edit the file. Clicking a function in this view causes the editor to jump to the function's declaration.

PROJECT EXPLORER

The Project Explorer lets you organize a consistent set of DXL files into projects. DXL Functions are displayed in the project's view, without the need to open the corresponding DXL file in an editor, enabling you to quickly navigate into your project contents. Feature-rich platform for faster, better results.





Debugging is a critical activity when developing source code.

**With DXL Editor Pro,
you have full control.**

WHY DXL EDITOR PRO?

- Faster coding process
- Higher quality results
- Finalize more projects
- User-friendly interface

YOU CAN:

- Add breakpoints
- Control execution
- Inspect variables
- Inspect data

Debug Features

DEBUG VIEW

The Debug View is the primary view to manage the debugging of a program. This view displays the stack frame for the suspended DXL execution you are debugging, showing the list of function calls.

BREAKPOINTS VIEW

The Breakpoints View lists all the breakpoints you currently have set in your workspace. You can double-click a breakpoint to display its location in the editor (if applicable). You can also enable or disable breakpoints, delete them, add new ones, and group them by working set.

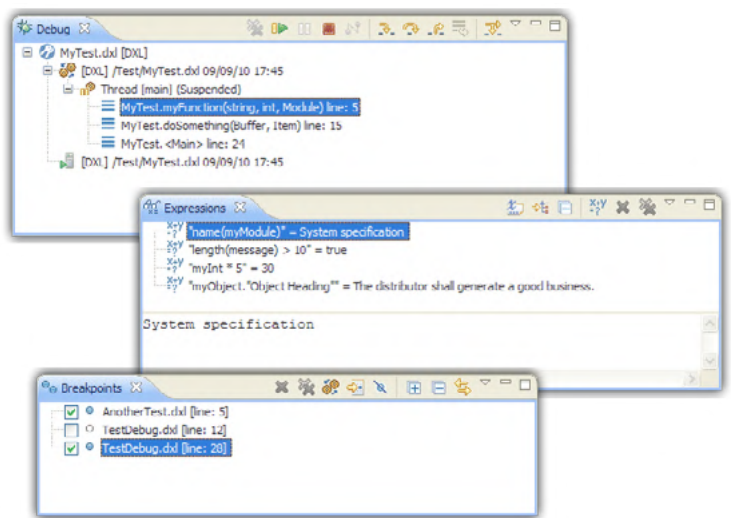
VARIABLES VIEW

The Variables View displays information about the variables associated with the selected function in the Debug View. Selecting a variable will display more detailed information in the Detail Pane.

EXPRESSIONS VIEW

The Expressions View allows you to dynamically execute queries to assist your debugging. You can enter any valid code and have the results calculated at every execution step to monitor values. Entries in the Expressions View can be selected to have more detailed information displayed in the Detail Pane.

Note: Please refer to online documentation for a full description of features and known limitations.



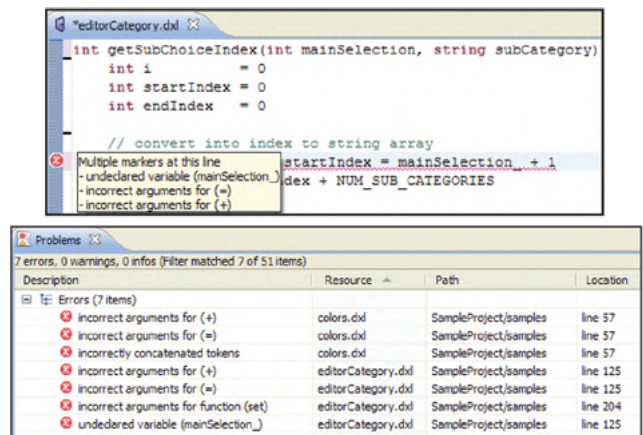
Compilation Features

COMPILATION

Each time a DXL file is modified and saved, the DXL compiler is automatically executed on that file. For each error, an annotation is added in the editor sidebar, with a tooltip showing the error message, and the corresponding line is underlined.

PROBLEMS VIEW

Navigation through DXL errors for a particular file, a project or the entire workspace is done using the Problems view.



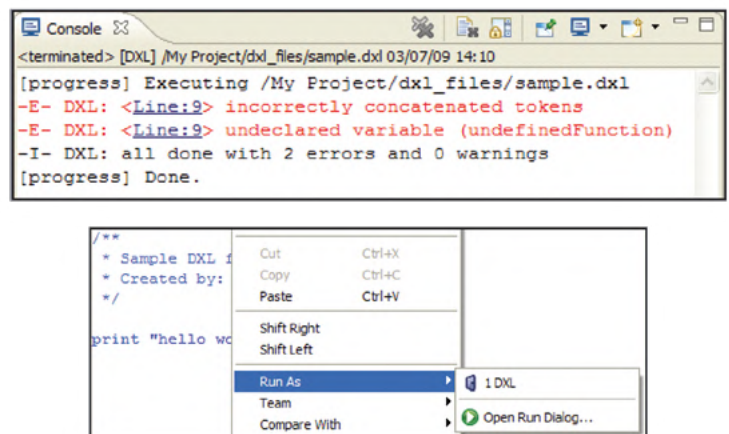
Execution Features

RUN

A DXL file can be executed directly from Eclipse.

CONSOLE

A console is opened when a DXL file is executed. This console logs any DXL text output, and indicates any DXL windows that may be opened by the executed file. Execution errors are displayed in the console and hyperlinks are available on line numbers to jump to the corresponding location in the DXL Editor Pro.



About SodusWillert

SodusWillert designs and distributes software solutions for Enterprise Interoperability, Data Transformation, and Model-Based Code Generation to improve traceability, exchange, and sharing of engineering data for the Aerospace, Automotive, Transportation, Defense and Medical industries. For more information, visit

soduswillert.com.

